



ROTO-SCRUB™ Bucket Washer

Designed, Sold and Distributed by
Dillon Floral Corporation, Bloomsburg, PA
www.dillonfloral.com 1-800-DILLONS
ext. 160 bwr@dillonfloral.com

Manufactured by:
Girton Manufacturing Co, Inc., Millville, PA
Girton Can Washer Model BW10
Specification No. F2999 S01



- ⊕ ROTO-SCRUB™ is made for convenient stand-up operation, and designed for fast thorough washing of floral storage buckets. Its efficient operation saves hours of labor over previous hand methods.
- ⊕ To operate, simply fill tank with water and disinfecting agent to a depth that partially submerges the brush.
- ⊕ An overflow pipe keeps the fluid at correct operating level and serves as a drain when removed from the bottom of the tank.
- ⊕ ROTO-SCRUB™ is constructed of stainless steel. The heavy tank is supported on angle legs and welded into a single rigid unit.
- ⊕ A compact, totally enclosed 1/3 HP motor with gearhead drives the scrubber brush.
- ⊕ Long-life nylon bristle brushes are available in different sizes and are easily interchanged.
- ⊕ The 5-gallon size fits most common floral storage containers. The ROTO-SCRUB™ can be used to wash rectangular Procona buckets.

Installation & Operation Instructions

⊕ Receiving

Immediately upon receipt of shipment, inspect the unit for possible damage incurred during shipment. Make any claims for damage to the transportation company.

⊕ Positioning

Move the ROTO-SCRUB™ to the area in which it is to be installed. Remove any remaining crating or skidding. Leave adequate work space around the unit for the operator and area for dirty and cleaned bucket accumulation.

⊕ Service Connections

- Electrical: The electrical connection to the ROTO-SCRUB™ is made at the wiring junction box on the motor (see wiring schematic, DWG. # BRW001-7). A 1/3 HP gearhead motor is supplied. (115/230 volt, single phase, 60 cycle). The unit is wired for 1 phase, 60 cycle, 115 volt service. A 15 amp service is required.
- Water: Water service is required for filling the tank. There is no fill connection on the tank. Use a hose to fill through the top of the tank.
- Drain: There is a 1" F.P.T. connection on the bottom of the tank for overflow/drain. With the standpipe screwed into the top of this fitting, the top of the pipe is the overflow level. The overflow pipe is screwed out to drain the tank. Pipe this overflow/drain connection to an open drain or provide a floor drain near the washer for it to drain into.

⊕ Set Up

- Install Brush: Remove two set screws from motor/brush coupling using an Allen wrench. Slide nylon shaft of brush into motor /brush coupling, using square steel key bar to line up slots. Replace set screw and tighten.
- Install Bucket Guides: The two stainless steel bucket support rods are adjustable for different size buckets by changing their position in the mounting holes at each end of the tank. Use the set of holes that best positions the buckets over the brush. Insert each bucket guide by sliding the straight end into one of the holes at the motor end of the tank. Then, drop the hooked end of the rod into one of the holes at the operation end of the tank. Repeat with other rod, mirroring the placement of the first rod.
- Fill: With the overflow pipe screwed into the drain connection, fill the tank to the top of the overflow. Add disinfectant to get the recommended strength. The tank holds approximately 55 gallons of

water at the overflow level. Use commercially available bucket cleaning solutions as labeled, or use chlorine bleach at a ratio 1 part bleach to 10 parts water. (per Dr. Terril Nell of the University of Florida-Gainesville and Dr. Michael Reid of the University of California-Davis who conducted their 2005 research study under the sponsorship of the American Floral Endowment.)

⊕ Operation

- Grasp the bucket and push it over the brush. Enough solution will be carried into the bucket by the brush to very quickly scrub and loosen all soil.

- Keeping your hands on the outside of the bucket, step on the foot switch to start the motor, which revolves the brush. Hold the bucket stationary and let the brush rotate to clean the inside of the bucket for a few moments. Then loosen hold of bucket to allow the bucket to rotate with the brush. As it rotates, hold a small hand brush to the outside of the bucket, cleaning any soil from bottom and sides of outside of bucket. Release the switch and remove the bucket. Rinse the buckets after washing if necessary. Invert buckets and allow to dry before stacking.

- Tips for staying dry:
 - ✦ Do not engage foot pedal to rotate brush unless you have a bucket over the brush.
 - ✦ A heavy rubber apron and rubber boots are recommended

⊕ Maintenance

- Keep the washer clean.
- Check level of lubrication in the gear box of the motor monthly.
- Keep the setscrews that hold the brush in the coupling tight to prevent wobble
- Keep the foot switch out of water on the floor and keep the cord out of the way so that it does not become damaged.
- Inspect the cords occasionally for damage.

⊕ Safety

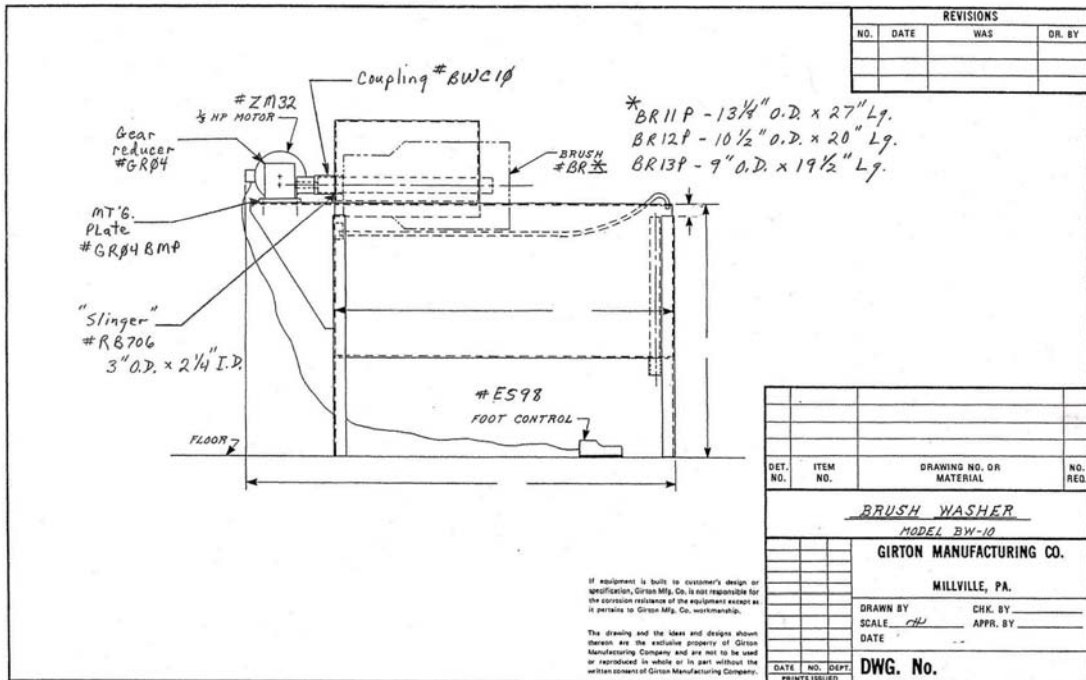
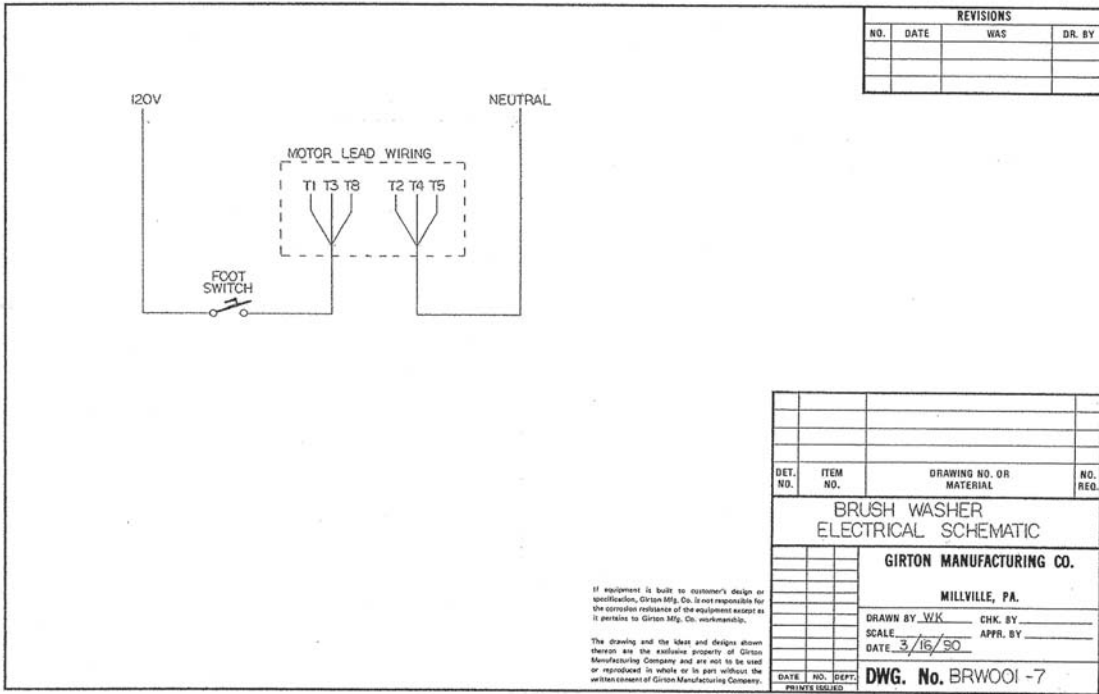
- Read attached Foot Control Warning
- Secure all loose clothing, jewelry and hair to avoid entanglement and possible entrapment in rotating brush.
- Never operate foot pedal without a bucket over the brush.

⊞ Replacement Parts

- Brushes- Nylon bristles with Nylon Shaft
Available sizes:
BR11P Nylon Brush, 13" Diameter
BR12P Nylon Brush, 10" Diameter
BR13P Nylon Brush, 9" Diameter
- Foot Pedal ES98
- 1/3 HP motor ZM32
- Gear Reducer GR04
- Mtg. Plate GR04BMP
- Slinger (Rubber Gasket) 3" O.D. 2 ¼" I.D. RB706
- Coupling BWC10
- Key Bar
- Set Screw

⊞ Specifications - Single Tank Model

- Over All Width: 24"
- Depth of Tank: 18"
- Working Height: 30"
- Overall Height: 39"
- Overall Length: 54"
- Capacity of Tank: 55 Gal.
- Domestic Shipping Weight: 250 lbs.
- Export Shipping Weight: 300 lbs.



WARNING

USE OF FOOT CONTROLS ON MACHINERY LACKING EFFECTIVE POINT OF OPERATION SAFEGUARDS CAN CAUSE SERIOUS INJURY TO THE OPERATOR.

Foot controls should only be used where "Point of Operation" and "Pinch Point" guarding devices have been properly installed and are utilized so that it is IMPOSSIBLE for the operator's hands or fingers to remain within the point of operation during the machine cycle.

POINT OF OPERATION-The point or area of the machine or equipment where the work piece or material is actually positioned and work is being performed during any process such as cutting, shearing, punching, forming, welding, riveting, assembling, etc.

PINCH POINT-Any point at which it is possible for a portion of the body to be caught and injured between moving machine or equipment or work piece parts.

IT IS THE RESPONSIBILITY OF THE USER to determine the suitability of a foot control for the user's intended use and to determine that the foot control chosen by the user and wiring up and installation of same will comply with all Federal, State and Local safety and health regulations and codes.

Due to the unlimited variety of business equipment, instruments, machines and vehicles on which our foot switches are used, the thousands of standards, and customers' varying interpretations of the standards covering these applications, it is impossible for LINEMASTER personnel to be experts on standards and requirements for all these products. We offer over 150 stock foot switch models and guards plus a large variety of specials which are made to customer specifications. We can advise you what is available in our foot switch line and you can examine models to see what meets your needs. We believe our customers' engineering departments should be the qualified experts in their own product field and know what specifications or details they may require in a foot switch for their equipment. If one of our stock models meets their needs, they can specify it, or possibly ask for a modification of a stock model if that is required.

SHOULD YOU HAVE ANY QUESTIONS OR IF ANY OF THE ABOVE WARNING IS UNCLEAR, PLEASE CALL LINEMASTER SWITCH CORPORATION. (800) 974-1000 www.linemaster.com

LINEMASTER SWITCH CORPORATION reserves the right to discontinue or change specifications, designs or materials, without notice consistent with sound engineering principles and modern practices.